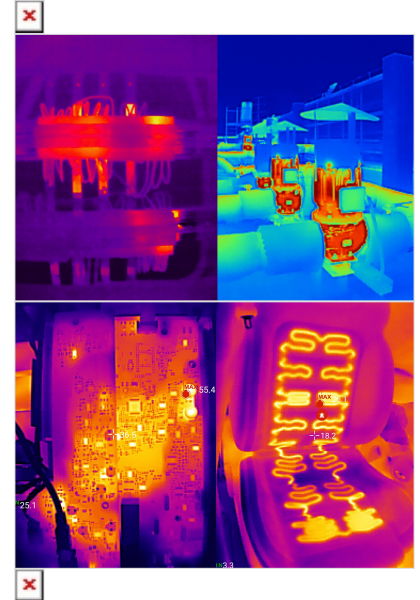


## TECHNICAL DATA

# Fluke iSee™ Mobile Thermal Camera - TC01A



## Key features

- 256 x 192 pixels, detailed image quality
- -10 to 550 °C range, covering wide applications
- $\pm 2\%$  or  $\pm 2$  °C accuracy, reliable and stable
- 25 Hz frame rate, smooth video without lag
- More than 10 standard and custom color palettes to achieve a variety of personalized images
- Real-time high and low temperature capture, without missing any details
- Adjustable emissivity to cope with different materials
- Comprehensive temperature analysis for spot, line and area, professional-grade thermal imaging software
- Real-time temperature alarm, timely response and handling
- Unattended automatic time-lapse photography
- Real-time image and video sharing and management, fast and efficient communication
- 1 meter drop, IP54 ingress protection, Fluke durability

## Product overview: Fluke iSee™ Mobile Thermal Camera - TC01A

### Detailed image quality comparable to professional thermal imagers

- 256 x 192 pixels, detailed image quality
- -10 to 550 °C range, covering wide applications
- 50 mk (0.05 °C) thermal sensitivity for fine screening
- $\pm 2\%$  or  $\pm 2$  °C accuracy, reliable and stable
- 25 Hz frame rate, smooth video without lag
- More than 10 standard and custom color palettes to achieve a variety of personalized images

### Powerful full temperature range analysis

- Real-time high and low temperature capture, without missing any details
- Adjustable emissivity to cope with different materials
- Comprehensive temperature analysis for spot, line and area, professional-grade thermal imaging software
- Real-time temperature alarm, timely response and handling
- Unattended automatic time-lapse photography
- Infrared and visible light image comparison for locating, comparing and archiving

#### Real-time image sharing, communication without barriers

- Real-time image and video sharing and management, fast and efficient communication
- Easy to add image annotation, communication without barriers

#### Small and portable, a second to get started

- Compact design as light as 22 g, perfect for your mobile phone size
- The iSee™ is made of high quality aluminum material for airway, with uniquely treated and laser etched surface
- 1 meter drop test, IP54 ingress protection, Fluke durability
- Optimized Fluke iSee™ application interfaces and menus, with professional operating experience, and it is easy to access all functions

## Specifications: Fluke iSee™ Mobile Thermal Camera - TC01A

Performance Specifications	
IR resolution	256 x 192
Pixel size	12 μm
Temperature range	-10 °C to 150 °C, 100°C to 550 °C
Temperature accuracy	± 2% of rdg or ± 2 °C, whichever is greater (@ 25 °C ± 5 °C ambient temperature)
Temperature measurement distance	0.25 m to 5 m <sup>[1]</sup>
Frame rate	25 Hz
Warm-up time	1 minutes
Focal length	Fixed focal length: 3.2 mm
Shutter mode	Built-in automatic shutter
Thermal sensitivity (NETD)	50 mK
Spectral range	8 to 14 μm
Field of view (H x V)	56° x 42°
Spatial resolution	3.81 mrad
General Specifications	
USB Interface	Type-C
Operating temperature	0 °C to 40 °C

Storage temperature	-30 °C to 60 °C
Operating humidity	10% to 90% RH, non-condensing
Power consumption	350 mW (Typical)
Drop test	1 m
Ingress protection	IEC 60529: IP54
Operating altitude	2000 m
Storage altitude	12 000 m
Dimensions (L x W x H)	59 x 32 x 10 mm
Weight	22 g
EMC Environment	IEC 61326-1: Portable
	CISPR 11: Group 1, Class A
	Group 1: Equipment has intentionally generated and/or uses conductively-coupled radio frequency energy that is necessary for the internal function of the equipment itself.
	Class A: Equipment is suitable for use in all establishments other than domestic and those directly connected to a low-voltage power supply network that supplies buildings used for domestic purposes. There may be potential difficulties in ensuring electromagnetic compatibility in other environments due to conducted and radiated disturbances.
	Caution: This equipment is not intended for use in residential environments and may not provide adequate protection to radio reception in such environments.
Warranty	2 years
<sup>[1]</sup> -10 °C ~ 10 °C applicable only for 0.25m ~ 3m.	

**Fluke.** *Keeping your world up and running.®*

**Fluke Corporation**  
PO Box 9090, Everett, WA 98206 U.S.A.

**For more information call:**  
In the U.S.A. (800) 443-5853  
In Europe/M-East/Africa  
+31 (0)40 267 5100  
In Canada (800)-36-FLUKE  
From other countries +1 (425) 446-5500  
[www.fluke.com/en-th](http://www.fluke.com/en-th)

©2023 Fluke Corporation. Specifications subject to  
change without notice.  
07/2023

**Modification of this document is not permitted  
without written permission from Fluke Corporation.**