

Applications and Solutions

The test solution of Energy Storage Device(Link View)



EMC Pretest Solution (https://www.gwinstek.com/en-US/EMI_Pretest/index)

LoRa Test Solution (https://www.gwinstek.com/en-US/LoRa_Solution/index)

Power Test Solutions (https://www.gwinstek.com/en-US/Power_Test_Solutions/index)

Automotive Test Solutions (/en-US/Automotive_Test_Solution/index/)

High Efficiency EMC Pretest Solution

(/en-US/Applications_and_Solutions/index/EMC_Solution)

The setting of Test Script (/en-US/Applications_and_Solutions/index/The_setting_Test_Script)

The test solution of Energy Storage Device(Link View)

(/en-US/Applications_and_Solutions/index/solution_Energy_Storage_Device)
Utilize PSW, PSU or PSB-1000 to realize IEC61215, IEC61646 or UL1703-35

(/en-US/Applications_and_Solutions/index/application_IEC61215)

The Automatic charging and discharging test of Energy Storage Device (LinkVieW)

GW Instek introduces LinkVieW software to allow users to quickly set test instruments for the operation of charging and discharging tests on battery and super capacitor, etc. Users can define charging and discharging procedures to automatically execute procedures so as to obtain measurement results. History graphs are available and they can be exported to Excel for further analysis.

Features:

Long Term Power Monitoring of I, V, P(W)

Create/define operation sequence for controlling Source/Load behavior.

Simultaneously run test sequence of each channel and data logging

Data Analyzer:

VieW chart: support Zoom In/Tracking of Samples

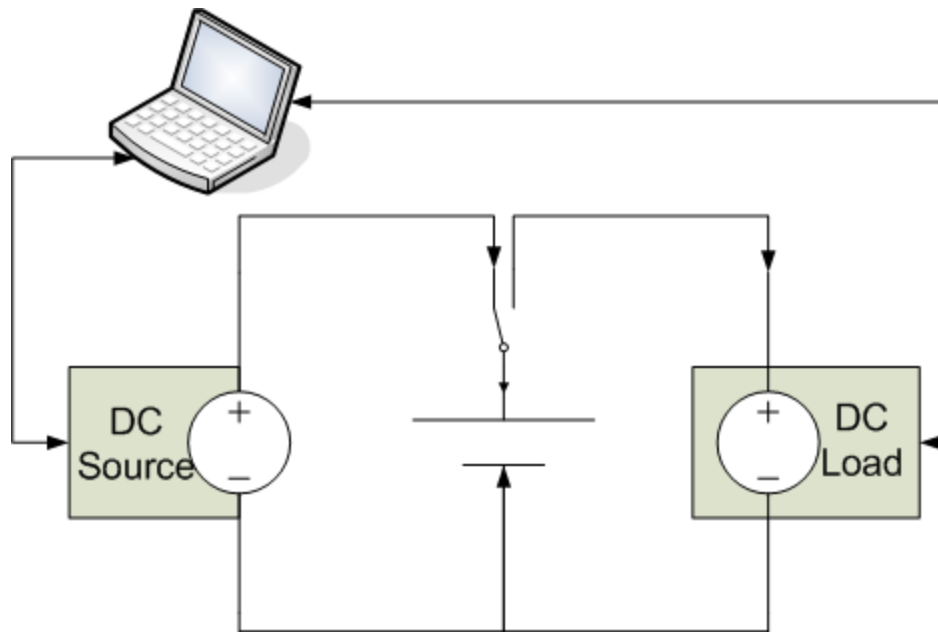
VieW table: summaries testing result for VieW and also each step including

Voltage/Current/Power/VMax/Imax/PMax/AmpHour

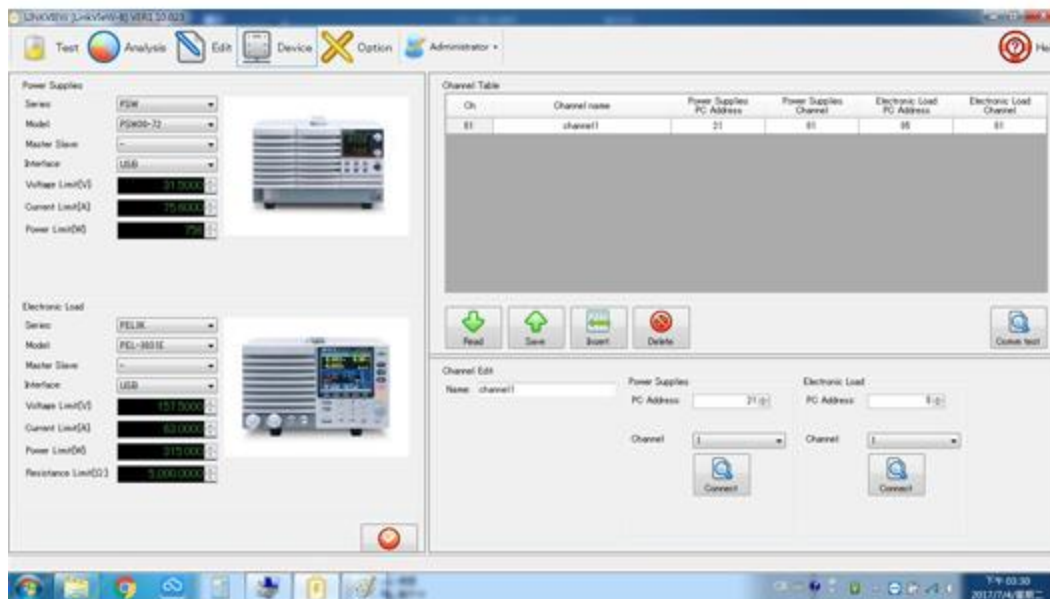
Live Data Monitoring:

VieW: Self-defined display range/offset adjustable

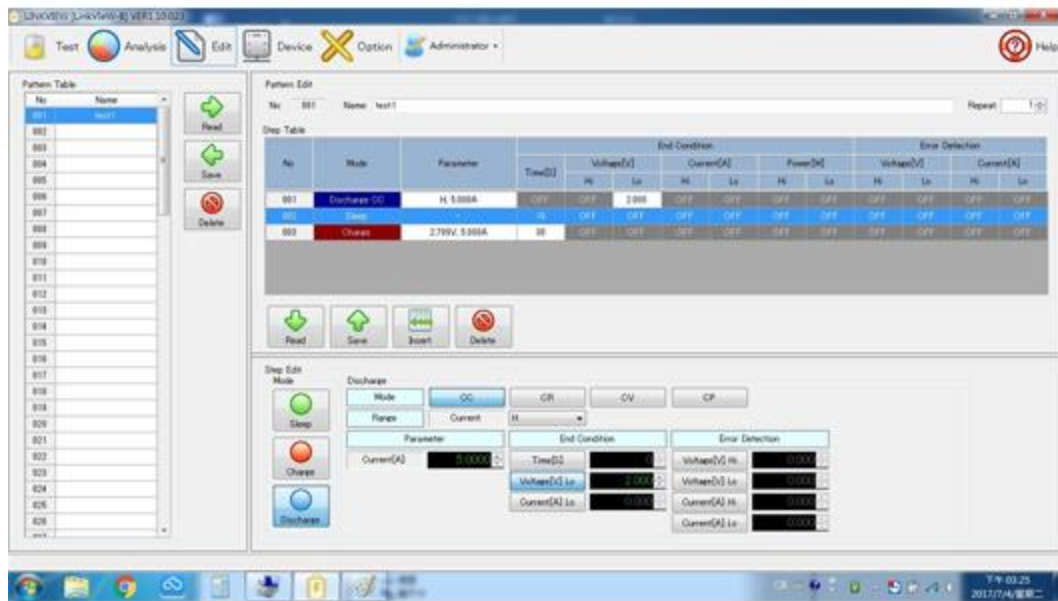
Controllable displayed curve



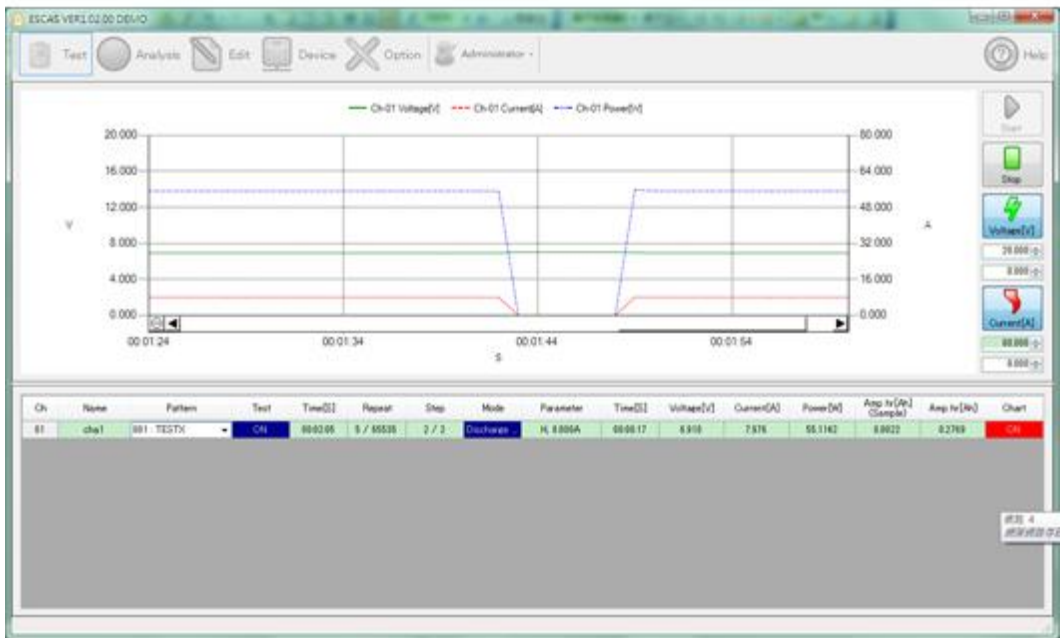
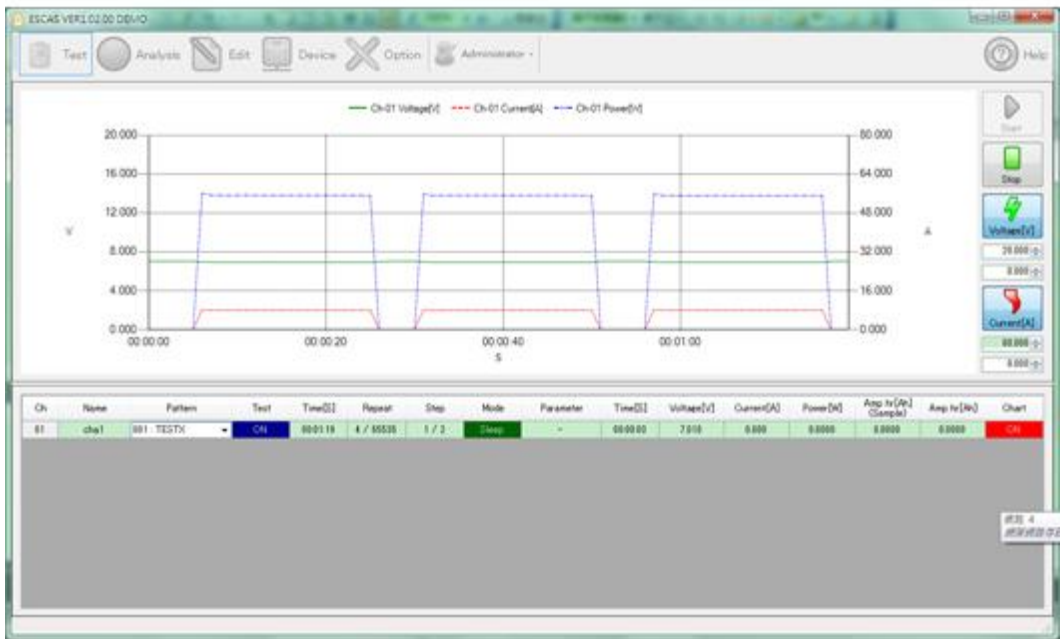
Charging and discharging connection diagram



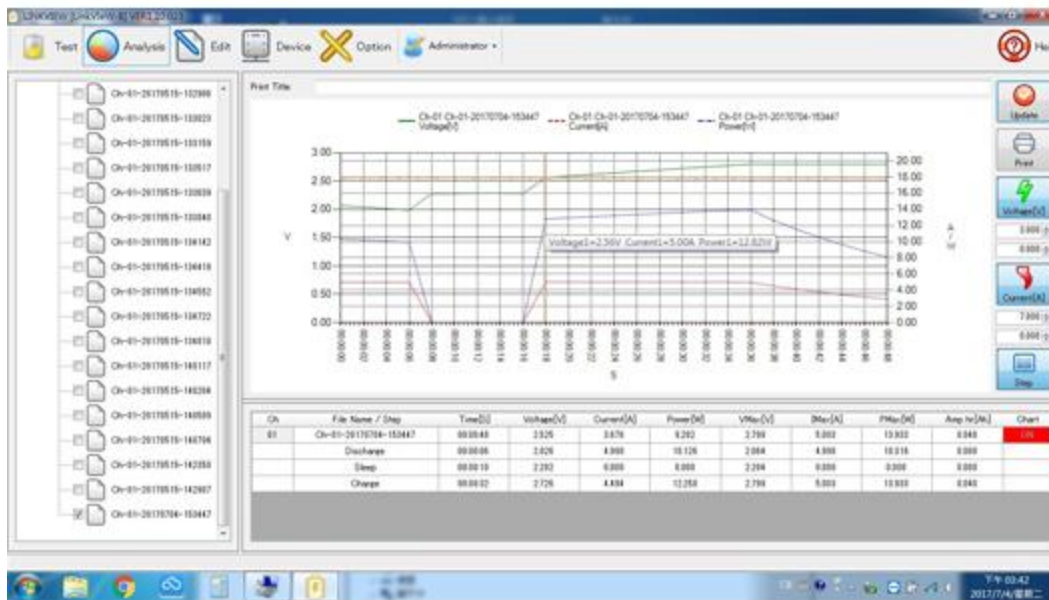
Power supply/load setting



Charging and discharging procedure editing



Measurement and analysis displays (Support Zoom in and measurement tracking)



Data Analyze/ Point and View/ Zoom-In/ Zoom Out/ Mnemonics display of testing steps/ Testing parameter ViEW display of each step

Spec.:

Support up to 12 channels/pattern.

Support up to 100 patterns (sequence).

Sequence steps: 1000 steps

Minimum record period: 1s.

Maximum step time: 100 Min.

Maximum repeat cycles: 65535 cycles.

Output w/ CSV file.

Support:

Programmable DC-Power supply: PSU/PSW/PSB series

Programmable DC-Load: PEL-2000/PEL-3000 series

List of supporting LinkView

PSW-Series (/en-global/products/detail/PSW-Series)

Multi-Range Switching D.C. Power Supply

PSU-Series (/en-global/products/detail/PSU-Series)

Programmable Switching D.C. Power Supply

PSB-2000 Series (/en-global/products/detail/PSB-2000)

Multi-Range Switching D.C. Power Supply

PEL-3000 Series (/en-global/products/detail/PEL-3000)	High Power Programmable D.C. Electronic Load
PEL-3000E Series (/en-global/products/detail/PEL-3000E)	Single Channel Programmable D.C. Electronic Load
PEL-2000A Series (/en-global/products/detail/PEL-2000A)	Multi-Channel Programmable D.C. Electronic Load

Download

Download (/upload/media/Application/EnergyStorageDevice/LinkView_1.10.023.zip)	LinkView Application software(Free of Charge)
Download (/upload/media/Application/EnergyStorageDevice/LinkView_SoftwareManual_en.pdf)	LinkView Software manual