

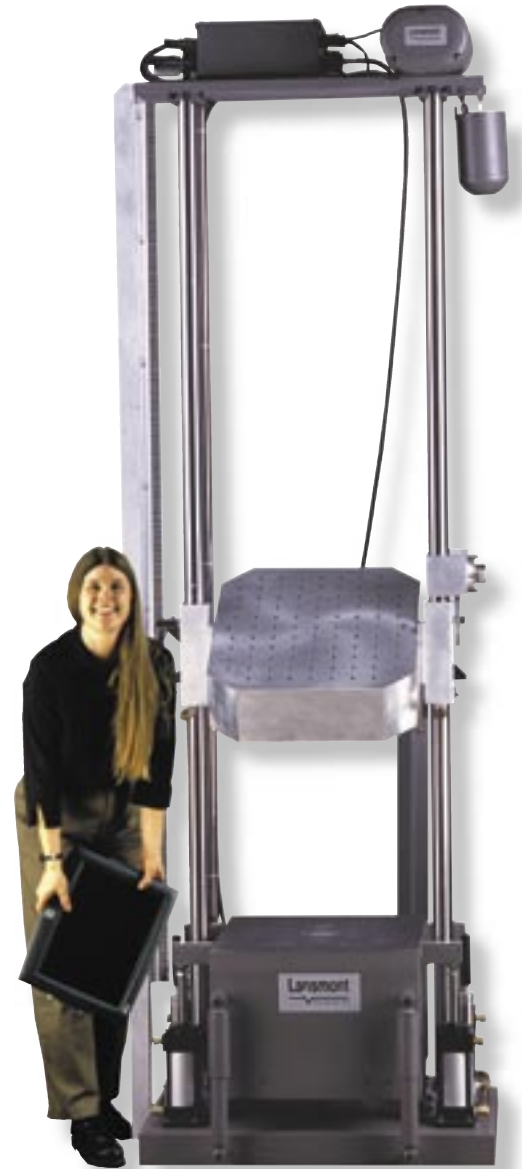
## Universal Shock Test System (USS)

Lansmont's Universal Shock Test System (USS) is the most revolutionary shock system that we have designed. This series of shock systems was specifically designed for testing large, flat objects such as digital displays or printed circuit boards. Unlike any other shock system in the world, the USS shock table has the ability to rotate precisely 90 degrees from a horizontal to a vertical orientation. Thus, the user no longer has to hassle with changing a product's orientation to perform tests another orientation. Simply rotate the table and continue your shock testing!

The USS series can be custom designed to meet a customer's shock testing needs. Allow Lansmont to design a USS that is specific to meeting your demands today!

### USS Features:

- Revolutionary rotating table design- the USS unique shock table design is capable of rotating 90 degrees.
- Customer-specific design options.
- Lansmont's TouchTest Shock II Controls incorporated with Lansmont's Test Partner 3 Data Acquisition System provide the most powerful shock system controller available!
- Half sine, trapezoidal, and terminal peak sawtooth shock pulse capabilities.
- Electric hoist for table position and seismic base impact surface that is on a low frequency, damped suspension system.
- Full range of applications training programs available.
- Worldwide Customer Service department



# Universal Shock Test System (USS)

## TECHNICAL SPECIFICATIONS

PHYSICAL	
Maximum Specimen Weight	150 lbs. (68 kg.), Standard*
Table Mounting Surface:	
Side to Side (between guide rods)	12 in. –24 in. (30.5 cm –61 cm) customer to specify
Front to Back	12 in. –24 in. (30.5 cm –61 cm) customer to specify
PERFORMANCE	
Maximum Acceleration	1500 g
Shock Pulse Duration Range	0.5 Msec –60 Msec **
Maximum Velocity Change	22 Ft/Sec (6.7 M/sec) ***
MACHINE SIZE	
Height	116 in. (295 cm)
Front to Back	46 in. (117 cm)
Width	36 in. (91 cm)
UTILITIES	
Voltage	100 – 240 VAC
Frequency	50 Hz – 60 Hz
Phase	Single Phase
Current	10A – 15A
Nitrogen	85 – 120 psi (6.0 – 8.4 kg/cm <sup>2</sup> ) OR
Plant Air	85 – 120 psi (6.0 – 8.4 kg/cm <sup>2</sup> )
SHIPPING WEIGHT	
Shipping Weight	4500 lbs. (2041 kg)

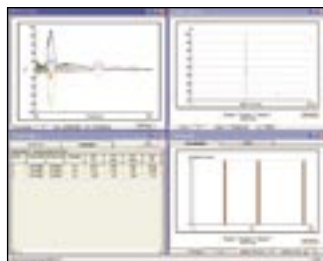
\* Larger specimen weights available...contact Lansmont

\*\* with appropriate programming kits

\*\*\* higher velocity change available...contact Lansmont

### TouchTest Shock II Controls:

- Available in either Bench-Top or Full "System Station" packages.
- Fully integrated machine set-up and control.
- Touch-screen user interface.
- New shock pulse predictor feature...makes setting up shock pulses easier than ever.
- Automatically communicates with Lansmont's Test Partner 3 Data Acquisition and Analysis System for the most advanced shock analysis ever.



**Lansmont**  
Corporation