

## **Model 95/115 Shock Test System**

Lansmont's Model 95/115 offers the test engineer a wide range of performance, with its 95 cm x 115 cm (37.4 in. x 45.3 in.) cast aluminum table, 1135 kg. (2500 lb.) payload capacity, and peak half-sine acceleration of 600 g's. The Model 95/115 can be configured to perform half-sine, trapezoidal and terminal peak saw-tooth waveforms with minimum set-up times between pulses. The one-piece cast aluminum table, damage-boundary programmers, and integral seismic reaction mass work in harmony to produce extremely clean, repeatable shock pulses. The Model 95/115 is the ideal solution for testing mid-size to larger products where pulse quality and system reliability are of critical importance. The Model 95/115 comes standard with Lansmont's new TouchTest Shock II control system, which allows the operator full control over all shock test parameters and includes advanced features such as shock pulse predictor, auto-cycle for consecutive shock pulses, and a wide range of user programmability.

### **95/115 Features:**

- Large payload capacity and table surface area make the 95/115 extremely versatile for larger products..
- Wide range of shock pulses are possible with the Model 95/115.
- TouchTest Shock II controls speed up the testing process by simplifying machine set-up and minimizing errors.
- Proven durability and reliability. Dual industrial hoists provide fast, reliable table/payload positioning.
- Redundant safety systems. The Model 95/115 utilizes hydro-pneumatic brakes which automatically engage in the event of power failure. The 95/115 also comes standard with one pressure sensitive safety-mat which returns the machine to a "safe" state if activated.
- Worldwide Customer Service department.



# Model 95/115 Shock Test System

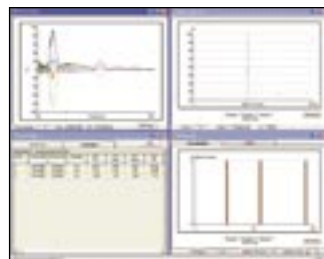
## TECHNICAL SPECIFICATIONS

PHYSICAL	
Maximum Specimen Weight	2,500 lbs. (1,135 kg)
Table Mounting Surface:	
Side to Side (between guide rods)	37.4 in. (95 cm)
Front to Back	45.3 in. (115 cm)
Height	No Restrictions
PERFORMANCE	
Maximum Acceleration	600 g
Shock Pulse Duration Range	2.5 Msec – 60 Msec*
Maximum Velocity Change	24 ft./sec (7.3 M/Sec)
MACHINE SIZE	
Height	118 in. (300 cm)
Front to Back	58.5 in. (149 cm)
Width	79 in. (201 cm)
UTILITIES	
Voltage	230 – 380 VAC
Frequency	50 Hz – 60 Hz
Phase	Three Phase
Current	8A – 10A
Nitrogen	2,200 psi (150 bar)
Plant Air	100 psi (6.8 bar) with LIK Option
SHIPPING WEIGHT	
Shipping Weight	11,000 lbs. (4,990 kg)

\* with appropriate programming kit

### TouchTest Shock II Controls:

- Available in either Bench-Top or Full "System Station" packages.
- Fully integrated machine set-up and control.
- Touch-screen user interface.
- New shock pulse predictor feature...makes setting up shock pulses easier than ever.
- Automatically communicates with Lansmont's Test Partner 3 Data Acquisition and Analysis System for the most advanced shock analysis ever.



**Lansmont**  
Corporation