

Model 65/81 Shock Test System

Lansmont's Model 65/81 offers the test engineer a wide range of performance, with its 65 cm x 81 cm (25.6 in. x 31.9 in.) cast aluminum table, 227 kg. (500 lb) payload capacity, and peak half-sine acceleration of 600 g's. The Model 65/81 can be configured to perform half-sine, trapezoidal and terminal peak saw-tooth waveforms with minimum set-up times between pulses. The one-piece cast aluminum table, damage-boundary programmer, and integral seismic reaction mass work in harmony to produce extremely clean, repeatable shock pulses. The Model 65/81 is the ideal solution for testing small to mid-size products where pulse quality and system reliability are of critical importance. The Model 65/81 comes standard with Lansmont's new TouchTest Shock II control system, which allows the operator full control over all shock test parameters and includes advanced features such as shock pulse predictor, auto-cycle for consecutive shock pulses, and a wide range of user programmability.

65/81 Features:

- Extremely clean shock waveforms. The Model 65/81 meets or exceeds many industrial, military, and corporate shock testing standards and specifications.
- Wide range of shock pulses are possible with the Model 65/81.
- TouchTest Shock II controls speed up the testing process by simplifying machine set-up and minimizing errors.
- Repetitive Shock Mode.
- Proven durability and reliability. The 65/81 shock test system used in Lansmont's Western Technical Service center is over 20 years old and still remains one of the premier shock test systems in the facility!
- Redundant safety systems. The Model 65/81 utilizes hydro-pneumatic brakes which automatically engage in the event of power failure. Additional braking mechanism included in the 65/81's hoist. The 65/81 also comes standard with one pressure sensitive safety-mat which returns the machine to a "safe" state if activated.
- Worldwide Customer Service department.



Model 65/81 Shock Test System

TECHNICAL SPECIFICATIONS

PHYSICAL	
Maximum Specimen Weight	500 lbs. (227 kg)
Table Mounting Surface:	
Side to Side (between guide rods)	25.6 in. (65 cm)
Front to Back	32 in. (81 cm)
Height	No Restrictions
PERFORMANCE	
Maximum Acceleration	600 g
Shock Pulse Duration Range	2 Msec – 60 Msec *
Maximum Velocity Change	24 ft./sec (7.3 M/Sec)**
MACHINE SIZE	
Height	117.5 in. (298 cm)
Front to Back	32 in. (65 cm)
Width	57.5 in. (146 cm)
UTILITIES	
Voltage	100 – 220 VAC
Frequency	50 Hz – 60 Hz
Phase	Single Phase***
Current	10A – 20A
Nitrogen	2,200 psi (150 bar)
Plant Air	100 psi (6.8 bar) with LIK Option
SHIPPING WEIGHT	
Shipping Weight	6,200 lbs. (2,812 kg)

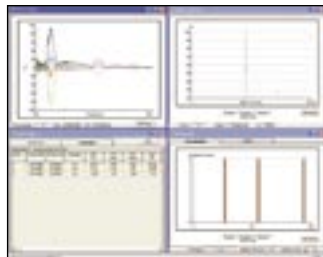
* with appropriate programming kit

** Higher velocity change available...contact Lansmont

*** 3-phase voltage available...contact Lansmont

TouchTest Shock II Controls:

- Available in either Bench-Top or Full "System Station" packages.
- Fully integrated machine set-up and control.
- Touch-screen user interface.
- New shock pulse predictor feature...makes setting up shock pulses easier than ever.
- Automatically communicates with Lansmont's Test Partner 3 Data Acquisition and Analysis System for the most advanced shock analysis ever.



Lansmont
Corporation