

Model 122 Shock Test System

Have a large product that simply won't fit on either the Model 65/81 or 95/115 but still requires all of their performance features? Lansmont's Model 122 shock test system offers the test engineer a system capable of half-sine shock accelerations to 600 g's and payload capacities of 1000 lbs. (455 kg) for the standard system and 2500 lbs. (1135 kg) for the heavy-duty system. The Model 122 shock test system's large table and payload capacity make it very versatile for testing larger products or multiple products mounted on the same table. The Model 122 can be configured to perform half-sine, trapezoidal and terminal peak saw-tooth waveforms with minimum set-up times between pulses. The welded aluminum table, damage-boundary programmers, and integral seismic reaction mass work in harmony to produce clean, repeatable shock pulses. The Model 122 is the ideal solution for testing larger products where pulse quality and system reliability are of critical importance. The Model 122 comes standard with Lansmont's new TouchTest Shock II control system, which allows the operator full control over all shock test parameters and includes advanced features such as shock pulse predictor, auto-cycle for consecutive shock pulses, and a wide range of user programmability.



Model 122 Features:

- Large payload capacity and table surface area make the 122 extremely versatile for larger products.
- Two configurations available (standard and heavy-duty) for tailoring to specific test conditions.
- Four Damage Boundary Programmers insure clean waveforms.
- Wide range of shock pulses are possible with the Model 122.
- TouchTest Shock II controls speed up the testing process by simplifying machine set-up and minimizing errors.
- Proven durability and reliability. Dual industrial hoists provide fast, reliable table/payload positioning.
- Redundant safety systems. The Model 122 utilizes hydro-pneumatic brakes which automatically engage in the event of power failure. The 122 also comes standard with one pressure sensitive safety-mat which returns the machine to a "safe" state if activated.
- Worldwide Customer Service department.

17 Mandeville Court, Monterey, CA 93940

1-800-LANSMONT • www.lansmont.com

Model 122 Shock Test System

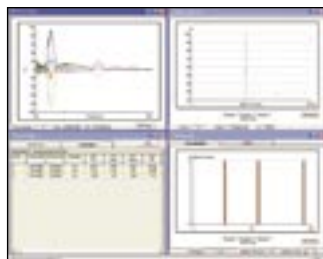
TECHNICAL SPECIFICATIONS

PHYSICAL	
Maximum Specimen Weight	1,000 lbs. (455 kg) Std. Version 2,500 lbs. (1,135 kg) Heavyweight Version
Table Mounting Surface:	
Side to Side (between guide rods)	48 in. (122 cm)
Front to Back	48 in. (122 cm)
Height	No Restrictions
PERFORMANCE	
Maximum Acceleration	600 g
Shock Pulse Duration Range	2.5 Msec – 60 Msec*
Maximum Velocity Change	24 ft./sec (7.3 M/Sec)
MACHINE SIZE	
Height	118 in. (300 cm) Std. Version, 127 in. (323 cm) Heavyweight
Front to Back	51 in. (130 cm)
Width	86 in. (218 cm)
UTILITIES	
Voltage	230 – 380 VAC
Frequency	50 Hz – 60 Hz
Phase	Three Phase
Current	8A – 10A
Nitrogen	2,200 psi (150 bar)
Plant Air	100 psi (6.8 bar) with LIK Option
SHIPPING WEIGHT	
Shipping Weight	12,600 lbs. (5,730 kg) Std. Version 21,000 lbs. (9,545 kg) Heavyweight Version

* with appropriate programming kit

TouchTest Shock II Controls:

- Available in either Bench-Top or Full "System Station" packages.
- Fully integrated machine set-up and control.
- Touch-screen user interface.
- New shock pulse predictor feature...makes setting up shock pulses easier than ever.
- Automatically communicates with Lansmont's Test Partner 3 Data Acquisition and Analysis System for the most advanced shock analysis ever.



Lansmont
Corporation