



Compact *iX* & *i* Series Power Systems 750VA-2250VA Programmable AC and DC Power Source / Analyzer



Combination AC and DC Power Source and Power Analyzer

Replace multiple instruments with a single multifunction unit

Single & Three Phase Operation

2253i/iX features a maximum output of 750VA per phase

750 VA to 2250 VA of Output Power

Cost effective power source

Arbitrary Waveform Generation

User defined voltage waveform and distortion programming (iX Series)

Built-in Digital Power Analyzer

Analyze frequency and time domain of both voltage and current (iX Series)

Rackmountable

Space-saving rackmount chassis

Scope Capture Capability

Built in voltage and current waveform acquisition capability (iX Series)

Powerful Programming Software

Powerful, yet easy to use, instrument control software included (Avionics test software also available)

Constant Power Mode

Provides increased current at reduced voltage to maximize efficiency

Integrated System

The Compact *iX* Series represents a new generation of AC/DC power sources that address the increasing demands on test equipment to perform additional functions at a lower cost. By combining a flexible AC/DC power source with a high performance power analyzer, the Compact *iX* Series is capable of handling complex applications that have traditionally required multiple systems.

The sleek integrated approach of the Compact *iX* Series avoids cable clutter that is commonly found in test systems. All connections are made internally and the need for digital multimeters, power harmonics analyzers, and current shunts or clamps is eliminated.

Since many components in the Compact *iX* Series are shared between the AC/DC source and the power analyzer, the total cost of the integrated system is less than the typical cost of a multiple unit system.

For less demanding applications, the Compact *i* Series provides similar output and transient capabilities as the Compact *iX* Series, as well as basic power measurements.

Easy To Use Local Controls

Both the Compact *iX* and *i* Series are microprocessor controlled and can be operated from an easy to use front panel keypad.

A large analog control knob can be used to quickly slew output parameters. This knob is controlled by a dynamic rate change algorithm that combines the benefits of precise control over small parameter changes, with quick sweeps through the entire range.

Applications

With precise output regulation and accuracy, the Compact *iX* Series AC/DC sources address many application areas for AC and DC power testing. The Compact *iX* also provides a high load current capability, single and three phase output modes (2253 *i/iX*), and built-in power analyzer measurements. Additional features, including line distortion simulation (LDS) and arbitrary waveform generation, address product quality and regulatory compliance testing.

Product Evaluation and Test

Increasingly, manufacturers of electronic equipment and appliances are required to fully evaluate and test their products over a wide range of input line conditions. The built-in output transient generation and readback measurement capability offers the convenience of an easy to use and fully integrated test system.

Adding the -MODE option to the 2253 *i/iX* allows all three amplifier outputs to be combined on phase A output terminal. No external switching or reconnection to the load is required.

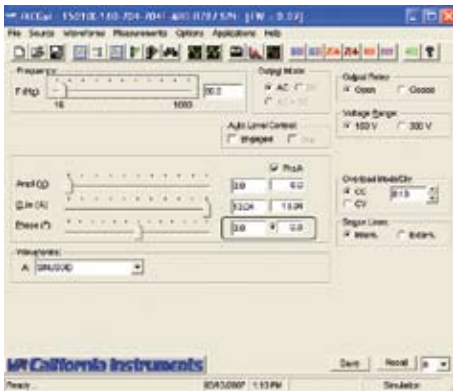
Compact iX Series - Measurement and Analysis

Avionics

With an output frequency range to 1000 Hz, at up to 300 Vrms, the Compact iX Series is well suited for aerospace applications. Precise frequency control and accurate load regulation are key requirements in these applications. Four remote control interfaces (IEEE 488, USB, LAN, & RS232) and the SCPI command language provide for easy integration into existing ATE systems. The Compact iX Series can eliminate the need for several additional pieces of test equipment, and occupies a minimal amount of rack space. Options are available for popular avionics test routines such as: *DO-160*, *Airbus ABD0100* and *AMD24*, *MIL-STD-704A-F*, and *Boeing 7E73B-0147*. Legacy programming support is also provided for the replacement of California Instruments' and third party AC Power Sources.

Remote Control

Standard and optional remote control interfaces allow programming of all instrument functions from an external computer. The popular SCPI command protocol is used for programming. Instrument drivers for popular programming environments such as National Instruments LabView™ are available to speed up system integration.



Instrument Control Software

Windows® Instrument Control Software is included with the Compact iX and i Series¹. This software provides easy access to the power source's capabilities without the need to develop any custom code. The following functions are available:

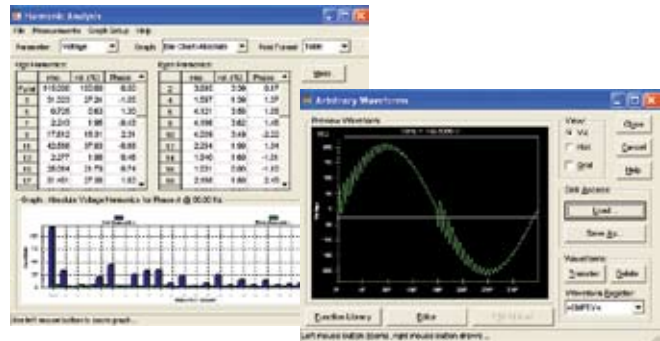
- Steady state output control (all parameters)
- Create, run, save, reload & print transient programs
- Generate & save harmonic waveforms [iX only]
- Generate & save arbitrary waveforms [iX only]
- Measure & log standard measurements
- Capture & display output voltage & current waveforms [iX only]
- Measure, display, print & log harmonic voltage & current measurements [iX only]
- Display bus traffic to & from the AC Source to help you develop your own test programs.
- Toggle between single and three phase output (2253 i/iX only).

1. Requires PC running Windows Vista™, Windows XP™, or Windows 2000™.

Harmonic Waveform Generation

Using the latest DSP technology, the Compact iX Series controller is capable of generating harmonic waveforms to test for harmonics susceptibility of a unit under test. The Instrument Control Software can be used to define harmonic waveforms by specifying amplitude and phase for up to 50 harmonics. The waveform data points are generated and downloaded by the Instrument Control Software to the AC source through the Remote Interface bus and remain in nonvolatile memory. Up to 50 waveforms can be stored and given a user defined name for easy recall.

The three phase Compact iX (2253i/iX) configuration offers independent waveform generation on each phase allowing three phase anomalies to be programmed and also allows simulation of unbalanced line conditions.



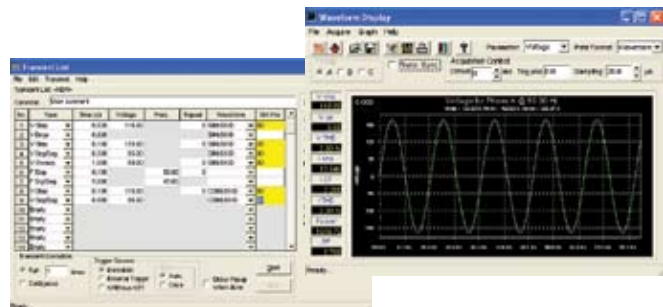
Arbitrary Waveform Generation (Compact iX Series only)

Using the provided Instrument Control Software, the user also has the ability to define arbitrary AC waveforms. The arbitrary waveform method of data entry provides an alternative method of specifying AC anomalies by providing specific waveform data points. The Instrument Control Software includes a catalog of custom waveforms.

Arbitrary waveform capability is a flexible way of simulating the effect of real-world AC power line conditions in both engineering and production environments.

AC/DC Transient Generation

The Compact iX and i Series controllers have a powerful AC and DC transient generation system that allows complex sequences of voltage, frequency and waveshapes to be generated. This further enhances the Compact i/iX's capability to simulate AC line conditions or DC disturbances. When combined with the multi phase arbitrary waveform capabilities, the AC and DC output possibilities are truly exceptional. In three phase system configurations, transient generation is controlled independently yet time synchronized on all three phases. Accurate phase angle control and synchronized transient list execution provide unparalleled accuracy in positioning AC output events.



Transient programming is easily accomplished from the front panel where clearly laid out menu's guide the user through the transient definition process. The front panel allows for transient execution, Start, Stop, Abort and Resume operations.

User defined transient sequences can be saved to nonvolatile memory for instant recall and execution at a later time. The included Instrument Control Software supports transient definitions using a spreadsheet-like data entry grid. A library of frequently used transient programs can be created on disk.

Compact iX Series - Specifications

Input	751i/iX (1 Phase Output)	1501i/iX (1 Phase Output)	2253i/iX (1 or 3 Phase Output)
Voltage:	115Vrms +/- 10% or 230Vrms +/- 10%	115Vrms +/- 10% or 230Vrms +/- 10%	115Vrms - 230Vrms +/- 10% (Universal Input) - (Output rated 1500VA@115Vinput, 115V-180Vinput derated linearly 1500VA-2250VA)
Frequency:	47 - 63 Hz	47 - 63 Hz	47 - 63 Hz
Current:	<8.5 Arms @ 115 V <4.4 Arms @ 230 V	<17 Arms @ 115 V <8.8 Arms @ 230 V	<20 Arms @ 115 V <15 Arms @ 230 V
PF:	0.97 (typical @ full load)	0.97 (typical @ full load)	0.98 (typical @ full load)
Efficiency:	80%	80%	77%
AC Output			
Voltage:	High Range: 0 - 300Vrms Low Range: 0 - 150Vrms	0 - 300Vrms 0 - 150Vrms	0 - 300Vrms 0 - 150Vrms
Max. Current:	High Range: 3.25Arms Low Range: 6.5Arms	6.5Arms 13Arms	3.25Arms (per phase) 6.5Arms (per phase)
Peak Current:	High Range: 10 A Peak Low Range: 20 A Peak	20 A Peak 40 A Peak	10 A Peak (per phase) 20 A Peak (per phase)
AC Power:	750VA	1500VA	750VA (per phase)
Distortion:	< 1% THD	< 1% THD	< 1% THD
DC Output			
Voltage:	High Range: 0 - 400Vdc Low Range: 0 - 200Vdc	0 - 400Vdc 0 - 200Vdc	0 - 400Vdc 0 - 200Vdc
Max. Current:	High Range: 1.63Adc Low Range: 1.63Adc	3.25Adc 1.63Adc	1.63Adc (per phase) 3.25Adc (per phase)
High Range:	500W	1000W	500W (per output)
Low Range:	250W	250W	500W (per output)
Voltage Accuracy/Programming Resolution (AC/DC)			
Accuracy (ALC mode ON):	0.1% FS (from 5V to FS)	0.1% FS (from 5V to FS)	0.1% FS (from 5V to FS)
Programming Resolution:	0.1V	0.1V	0.1V
Frequency			
Range:	16 - 1000Hz	16 - 1000Hz	16 - 1000Hz
Resolution:	0.01 Hz (16 - 81.91 Hz), 0.1 Hz (82.0 - 819.1 Hz) 1 Hz (820 - 1000 Hz)	0.01 Hz (16 - 81.91 Hz), 0.1 Hz (82.0 - 819.1 Hz) 1 Hz (820 - 1000 Hz)	0.01 Hz (16 - 81.91 Hz), 0.1 Hz (82.0 - 819.1 Hz) 1 Hz (820 Hz - 1000 Hz)
Accuracy:	0.025%	0.025%	0.025%
Measurements			
Voltage Accuracy:	V: 0.1% FS	V: 0.1% FS	V: 0.1% FS
Current Accuracy:	C: 0.5% FS	C: 0.5% FS	C: 0.5% FS
Mechanical Specifications			
Dimensions	H: 3.5" (89mm), W: 19" (483mm), D: 23" (584mm)		H: 5.25" (133mm), W: 19" (483mm), D: 23" (584mm)
Weight:	55 lbs (25kg)	66 lbs (30kg)	58 lbs (26kg)
Operating Temperature:	0-40°C	0-40°C	0-40°C
Interfaces			
USB:	Standard	Standard	Standard
GPIB:	Option (i) Std (iX)	Option (i) Std (iX)	Option (i) Std (iX)
LAN:	Option (iX)	Option (iX)	Option (iX)
RS232:	N/A	N/A	Standard

Note: Specifications are subject to change without notice. Specifications are warranted over an ambient temperature range of 25±5°C. Unless otherwise noted, specifications are per phase for a sine wave with a resistive load and apply after a 30 minute warm-up period. For three phase configurations, all specifications are for L-N. Phase angle specifications are valid under balanced load conditions only.

Ordering Information

Model	Output Power AC	Phase Output	Max. Current per phase				Input Voltage
			Low V range AC	Low V range DC	High V range AC	High V range DC	
751i/iX	750 VA	1	6.5	1.63	3.25	1.63	115/230V
1501i/iX	1.5 kVA	1	13.0	1.63	6.5	3.25	115/230V
2253i/iX	2.25 kVA	3/1 ¹	6.5	3.25	3.25	1.63	115-230V

1. With -MODE Option

Feature Comparison

Controller:	i	iX
AC Mode	x	x
DC Mode	x	x
AC+DC Mode		x
Transient Programming	x	x
Arbitrary Waveforms		x
Measurements	x	x
Harmonic Measurements		x
Waveform Acquisition		x

Model:

Refer to table shown for model numbers and configurations.

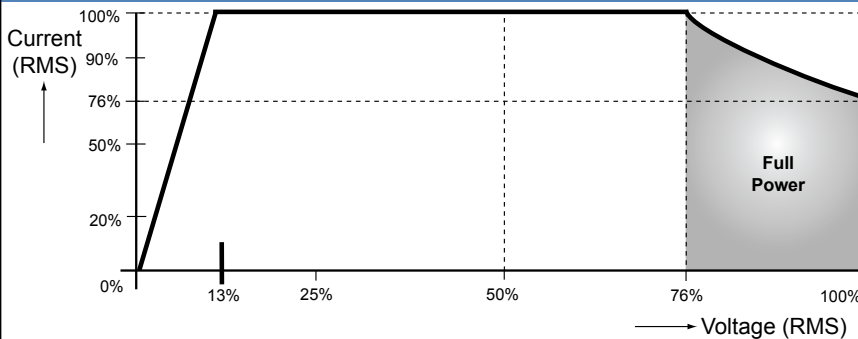
Supplied with:

User Manual, Programming Manual, Software (all on CD ROM)

Options

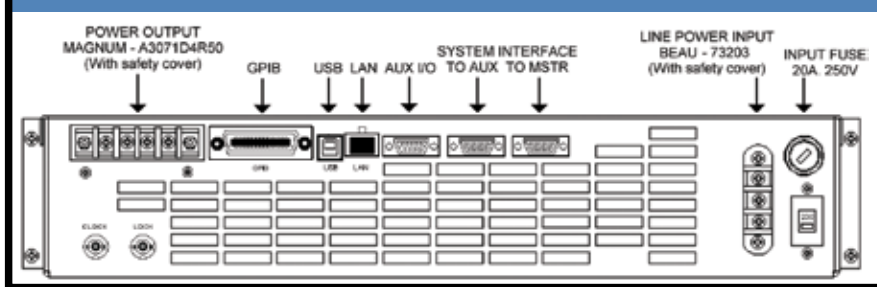
- 160 RTCA/DO-160D/E and EUROCAE test firmware. Refer to -160 option data sheet for details.
- 704 Mil Std 704D/E test firmware
- 704F Mil Std 704 Revision A-F test firmware/software.
- ABD Airbus Directive 0100.1.8 tests.
- ABL ABLE Command
- AMD Airbus AMD-24C Test
- B787 Boeing 787B3-0147 tests.
- EXS External Sync Input.
- LAN Ethernet Lan Interface (RJ45 Connector) (iX Only).
- LF Limits maximum frequency to 500Hz.
- LKM Clock/Lock Master
- LKS Clock/Lock Auxiliary
- MODE Allows all three amplifier outputs to be combined on phase A output terminal. No external switching or reconnection to the load is required (2253 i/iX only).
- RMS Rackmount Slides (2253 Only)
- RPF Remote programming frequency (0-10 V DC).
- RPV Remote programming voltage (0-10 V DC).
- WHM Watt-hour measurement.

Constant Power Chart

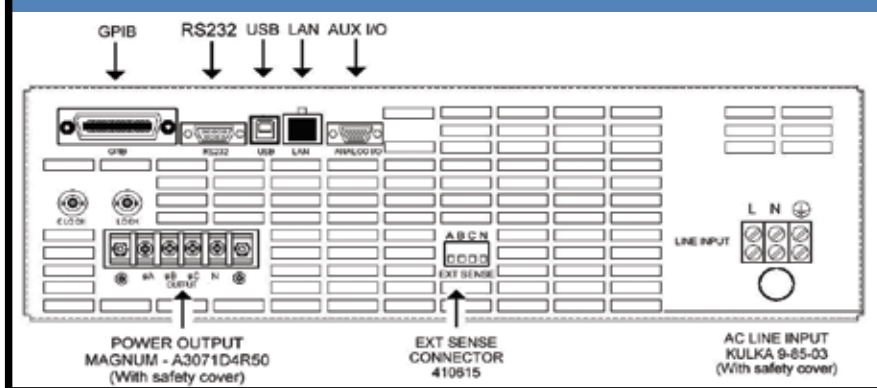


Note: Constant power mode provides increased current at reduced voltage. Maximum available current shown.

Compact 750/1501 i/iX Rear Panel



Compact 2253 i/iX Rear Panel



Note: Specifications are subject to change without notice. Specifications are warranted over an ambient temperature range of 25[±]5° C. Unless otherwise noted, specifications are per phase for a sinewave with a resistive load and apply after a 30 minute warm-up period. For three phase configurations, all specifications are for L-N. Phase angle specifications are valid under balanced load conditions only.