

Clutch Burst Machine

Model 1412



Typical Specifications

- 20,000 RPM Maximum Speed
- Fabricated Steel Base
- 20" Diameter Burst Chamber
- Visual Access for Photographs
- 20,000 RPM Variable Frequency AC Drive
- Insulated, stainless steel chamber
- Pneumatic Emergency Brake
- Door Safety Interlocks
- Self-Standing Computer Based Control and Data Acquisition System
- Optional electric heater for integral control of chamber and sample temperature control.

Disclaimer:

Information presented in this brochure is for informational purposes only. Link Engineering Company reserves the right to make changes, alterations and substitutions to the machines, components or other information presented in this brochure without prior notice. For the latest information contact Link Engineering Company.

Equipment pictured in this brochure may be shown with safety equipment removed or disabled for purposes of illustration. Equipment must never be operated with safety equipment removed or disabled.

Single Source for Testing Equipment and Services Across America and Around the World

Link Engineering Company

734-453-0800

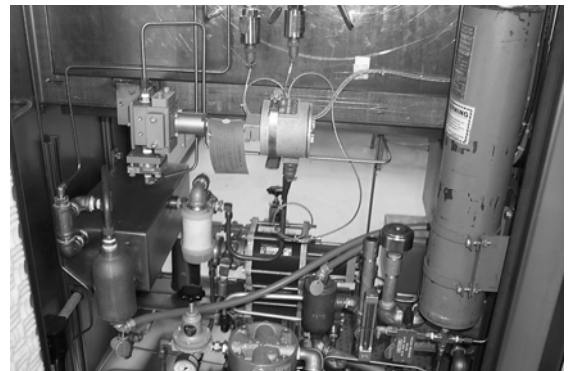
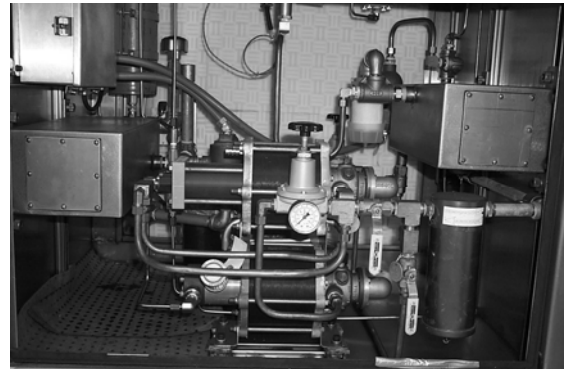
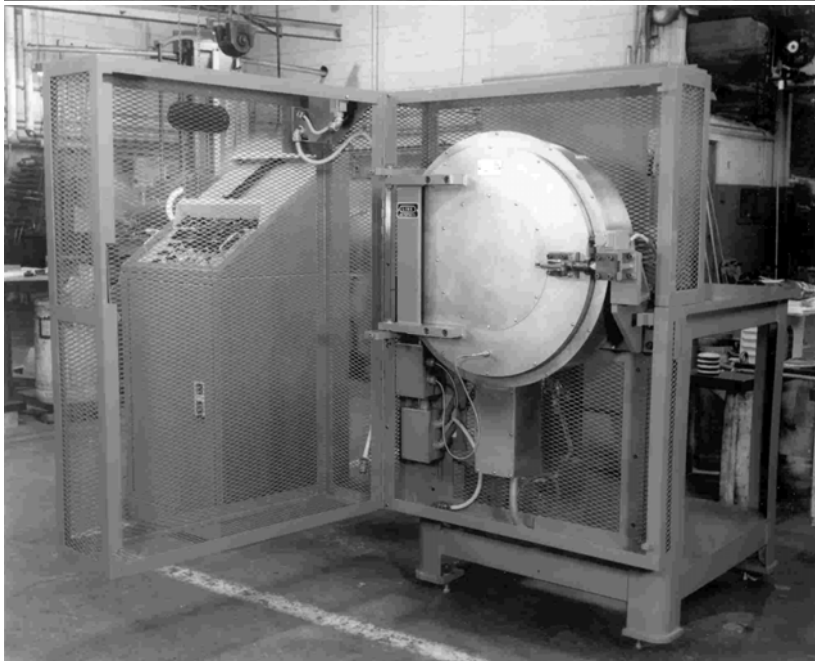
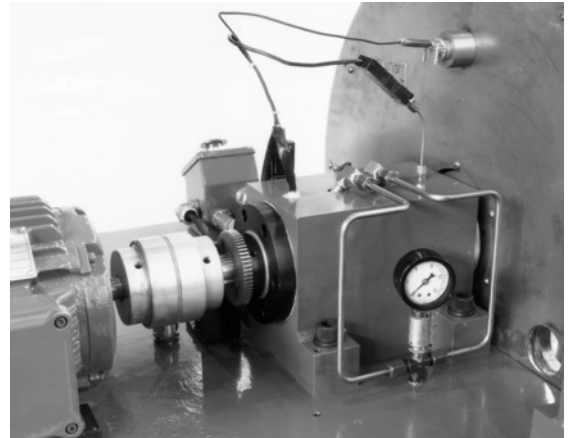
www.linkeng.com

Asia • Europe • North America • South America



Link Engineering Company
www.linkeng.com

Clutch Burst Machine Model 1412



Disclaimer:

Information presented in this brochure is for informational purposes only. Link Engineering Company reserves the right to make changes, alterations and substitutions to the machines, components or other information presented in this brochure without prior notice. For the latest information contact Link Engineering Company.

Equipment pictured in this brochure may be shown with safety equipment removed or disabled for purposes of illustration. Equipment must never be operated with safety equipment removed or disabled.

Single Source for Testing Equipment and Services Across America and Around the World

Link Engineering Company

734-453-0800

www.linkeng.com

Asia • Europe • North America • South America