

InterpretAir™

WLAN Site Survey Software

Intelligent WLAN planning, verification, and expansion

InterpretAir provides wireless LAN installers and network professionals with the vision they need to plan, deploy, verify, and document their 802.11a/b/g/n WLAN networks. InterpretAir is a wireless site survey tool and much more; it provides visualization of Network Health metrics, greatly simplifying WLAN environment analysis and enabling performance tuning. Discover where and why WLAN network performance is sub-optimal and take action; proactively addressing problems that could affect mobile application performance.

Easily plan, simulate, and verify wireless networks using graphic visualization

- Easily and graphically survey 802.11 a/b/g/n wireless networks
- Visualize Network Health using a customizable combination of performance parameters
- Quickly create WLAN designs for multi-floor deployments
- Discover areas of sub-optimal coverage
- Fine tune RF performance
- Easily document your WLAN environment
- Includes GPS support to quickly conduct outdoor site surveys

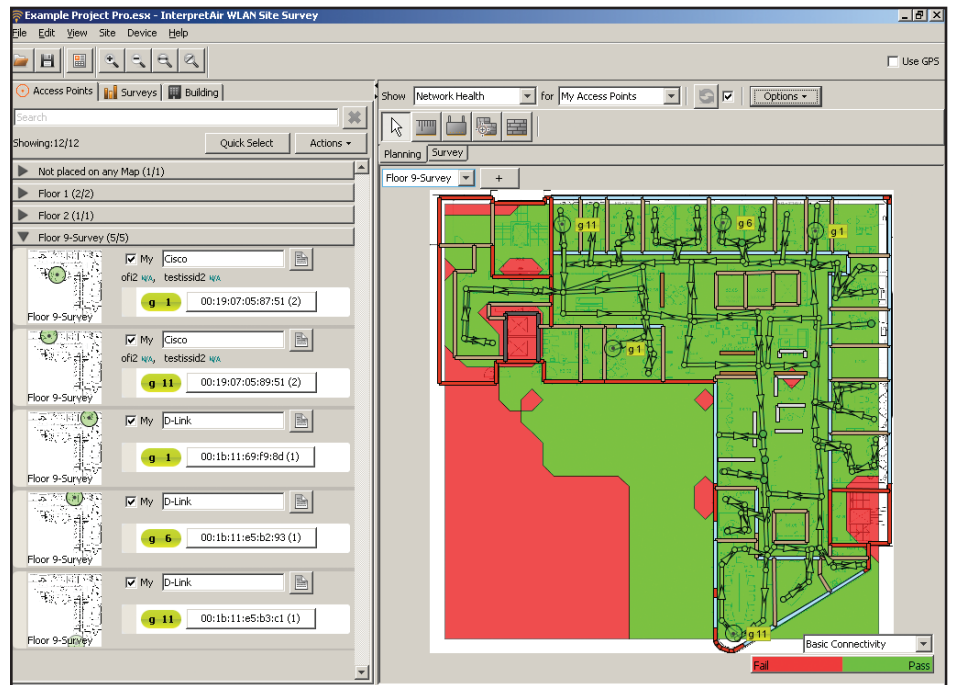


Figure 1: InterpretAir software's Network Health – shows areas of the WLAN which meet/do not meet user requirements

Site map

Import a BMP, GIF, JPEG or PNG formatted image file into the InterpretAir application, quickly calibrate map scale, and begin your site survey in minutes. Collect real-time RF metrics to create an overlay illustration of wireless coverage over your site floor plan.

Network health

InterpretAir software takes RF site survey analysis to a new level by enabling visualization of multiple measurement criteria in a single view, simplifying analysis and accelerating decision making. Determine the performance metric minimum and maximum values for variables such as signal strength, signal-to-noise ratio, and AP overlap. Create multiple profiles that enable you to visualize how your WLAN is positioned to support

various applications such as wireless Voice over IP or video. InterpretAir software provides a graphical overlay over your floor plan that clearly illustrates where actual WLAN performance meets or does not meet your unique environmental and performance criteria.

WLAN security

Through the site survey process, InterpretAir software provides visualization of production access points, and enables you to visually identify and locate rogue and neighboring access points.

RF signals from production access points can penetrate and extend WLAN coverage beyond the office walls. InterpretAir software enables visualization of RF signals that

extend outside of your facility. Are your access points configured for encryption? InterpretAir discovers and reports access point security.

Advanced planning and network simulation

How will the wireless network perform? Simulate WLAN performance using InterpretAir software prior to installing any live wireless LAN equipment. Define environmental characteristics – such as wall construction materials, access point power configuration, and antenna selection – to view how subtle changes may affect WLAN performance before installing a single access point.

3D modeling of multi-floor buildings

With InterpretAir software’s 3D modeling, you can simulate multi-floor buildings and visualize signal bleeding from one floor to the next. First, define the floor characteristics and ceiling height. Next, define 3 alignment points, to properly correlate one floor to another. Place an AP on a floor and easily see how much of it’s signal strength bleeds to the floor above or below allowing you to see the true interaction of your WLAN in a multi-floor environment.



Free trial

InterpretAir is available for limited evaluation via electronic download from Fluke Networks’ web site at www.flukenetworks.com/interpretair

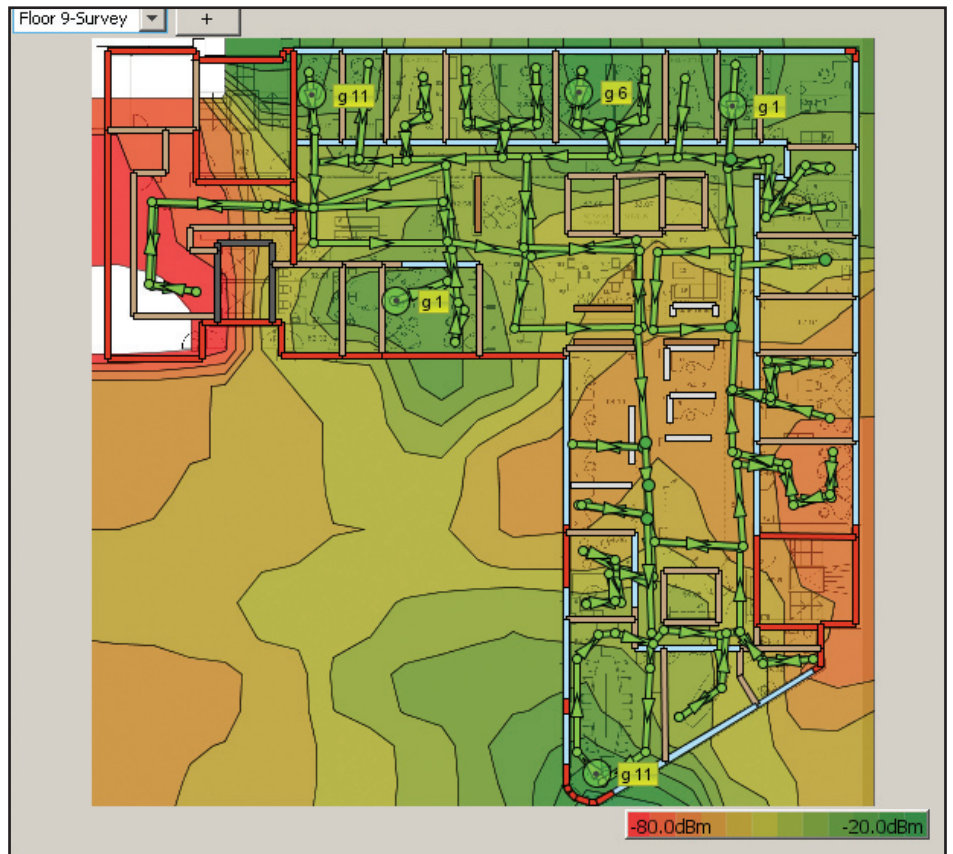


Figure 2: WLAN signal strength coverage map

Verification and reporting

What did WLAN coverage look like when your access points were installed? Does the network perform as planned in the initial site survey? How does current performance compare? Physical changes in the enterprise can affect RF performance. The InterpretAir software integrated report generator automatically creates comprehensive site survey documentation that can be recalled for future analysis and comparison. Reports are generated in Microsoft® Word, RTF, or PDF formats and easily be printed or emailed.

802.11n support – Keeping up with WLAN evolution

Wireless LANs are becoming more complex with the introduction of 802.11n. InterpretAir works with various optional WLAN network interface cards to fully support 802.11 a/b/g/n and provide visibility and planning capabilities across 2.4GHz and 5GHz frequencies.

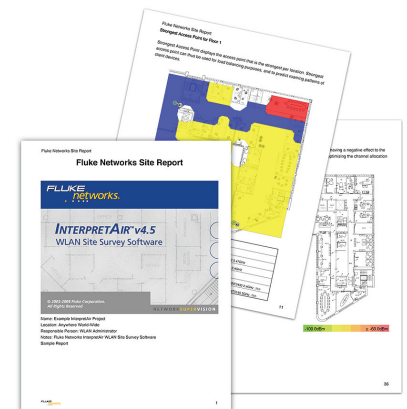


Figure 3: Printed report sample



System requirements:

- OptiView® Series II/III Integrated Network Analyzer or laptop/tablet computer with Pentium® III series processor
- Operating System: Microsoft® Vista® Business or Ultimate, Windows XP, 2000 Professional/Tablet PC Edition
- Minimum 512 MB RAM
- Minimum 500 MB hard drive space available
- One (supported) wireless LAN network interface card
- Minimum of one WLAN access point for real-time analysis
- Electronic (BMP, GIF, JPEG or PNG) image file of facility to be surveyed
- Supported GPS device for automated outdoor site surveys

Device Support (Wi-Fi Adapters & GPS)

InterpretAir WLAN Site Survey software supports the following 802.11 Wi-Fi network adapters for performing surveys. You do not need a wireless network adapter if you do not want to record signal data.

Supported External Wi-Fi Adapters

Brand	Model	802.11a	802.11b/g	802.11n	CardBus	Express Card
3COM®	3CRPAG175B	X	X		X	
3COM®	3CRWE15A72		X		X	
3COM®	3CRXJK10075		X		X	
Belkin®	F6D3010	X	X		X	
Cisco®	CB-21AG	X	X		X	
D-Link®	DWL-AG650	X	X		X	
D-Link®	DWL-AG660	X	X		X	
D-Link®	DWA-642		X	X	X	
D-Link®	DWA-643		X	X		X
D-Link®	DWA-645		X	X	X	
D-Link®	DWA-652		X	X	X	
D-Link®	DWL-G650, Revisions B5, C3, C4		X		X	
Ekahau™	NIC-54	X	X		X	
Ekahau™	NIC-300	X	X	X	X	
Fluke Networks	FNET-WCARD Wireless Network Adapter	X	X		X	
Fluke Networks	802.11 a/b/g/n Wireless Network Analyzer	X	X	X	X	
I-O DATA	WN-WAG/CBH	X	X		X	
LANCOM®	AirLancer® MC-54ag	X	X		X	
Linksys®	WPC55AG, v1.1, v1.3	X	X		X	
NEC®	Aterm® WL300NC	X	X	X	X	
NEC®	Aterm WL54SC	X	X		X	
NetGear®	WAG511	X	X		X	
NetGear®	WAG511v2	X	X		X	
NetGear®	WG511U	X	X		X	
Nortel Networks	2202	X	X		X	
Proxim	ORiNOCO® 8480	X	X		X	
SMC®	EZ Connect™ Universal SMC2336W-AG	X	X		X	
TP-Link®	TL-WN610G (802.11g only)		X		X	
Ubiquiti	SRX	X	X			X
Ubiquiti	SRC	X	X		X	



Supported Integrated Wi-Fi Adapters

Brand	Model
Intel	Centrino 2200BG
Intel	Centrino 2915ABG
Intel	Centrino 3945ABG



Laptops with the built-in Intel® Centrino® Wi-Fi chipset can be used for site surveys. However, since their measurement accuracy and network scanning speed is not optimal for site surveys, you should use a third-party network adapter for site survey measurements.

Supported GPS Receivers

You need a GPS receiver to use the GPS survey feature. InterpretAir software supports following GPS receivers:

- Bluetooth® GPS devices that support NMEA
- USB GPS devices that support NMEA, Garmin™ protocol, or Trimble® TAIP
- Network connected GPS devices (usually using TCP/IP or UDP), that supports TAIP NMEA
- GPS devices connected to PC-CARD that supports NMEA
- GPS devices that are connected to an RS-232 port, that support NMEA, Garmin TAIP

GPS Navigators are typically not supported, even if they have a USB connection

Ordering information

Model	Description
INTERPRETAIR	InterpretAir CD includes application software and users manual.
IA-AA	Wireless Software Suite including: InterpretAir WLAN Site Survey software and AnalyzeAir™ Wi-Fi Spectrum Analyzer
OPVS3-WLESS	OptiView WLAN Suite includes: OptiView Wireless Analysis Option 802.11 a/b/g/n, InterpretAir WLAN Site Survey Software and AnalyzeAir Wi-Fi Spectrum Analyzer
OPVS3-WLESS/C	OptiView WLAN Suite includes: OptiView Wireless Analysis Option 802.11 a/b/g/n, Cisco WLAN Infrastructure Analysis Option, InterpretAir WLAN Site Survey Software and AnalyzeAir Wi-Fi Spectrum Analyzer
GLD-INTERPRETAIR	Gold support services, 1 year

NETWORK SUPERVISION

Fluke Networks
P.O. Box 777, Everett, WA USA 98206-0777

Fluke Networks operates in more than 50 countries worldwide. To find your local office contact details, go to www.flukenetworks.com/contact.

©2009 Fluke Corporation. All rights reserved.
Printed in U.S.A. 3/2009 2527139 D-US-N Rev F